

DEMO HOUR

DEMO HOUR: WatchThru

Issue: XXIV.6 November + December 2017

Page: 8

Digital Citation ([http://dl.acm.org/downformats.cfm?id=3143318&parent_id={REL\[6367\]\[article_issue\]zIPgRGfIREL}&expformat=acmref](http://dl.acm.org/downformats.cfm?id=3143318&parent_id={REL[6367][article_issue]zIPgRGfIREL}&expformat=acmref))

Authors:

Dirk Wenig, Johannes Schöning, Alex Olwal, Mathias Oben, Rainer Malaka

WatchThru is an interactive method for extending wrist-worn displays on commercially available smartwatches. To address the limited visual and interaction space, WatchThru expands the device into 3D through a transparent display. This enables three novel interactions that leverage and extend smartwatch glanceability: First-Person Visuals, Second Perspective, and Peek-through. In contrast to most AR displays, this device does not obstruct the user's face, nor does it require the user to hold the device (like a smartphone). It therefore has interesting potential as a wearable, unobtrusive, and always-accessible wrist-worn AR device.

Wenig, D., Schöning, J., Olwal, A., Oben, M., and Malaka, R. WatchThru: Expanding smartwatch displays with mid-air visuals and wrist-worn augmented reality. *Proceedings of the International Conference on Human Factors in Computing Systems*. 2017.

<http://www.dirkwenig.eu/research/watchthru/> (<http://www.dirkwenig.eu/research/watchthru/>)

Dirk Wenig, University of Bremen

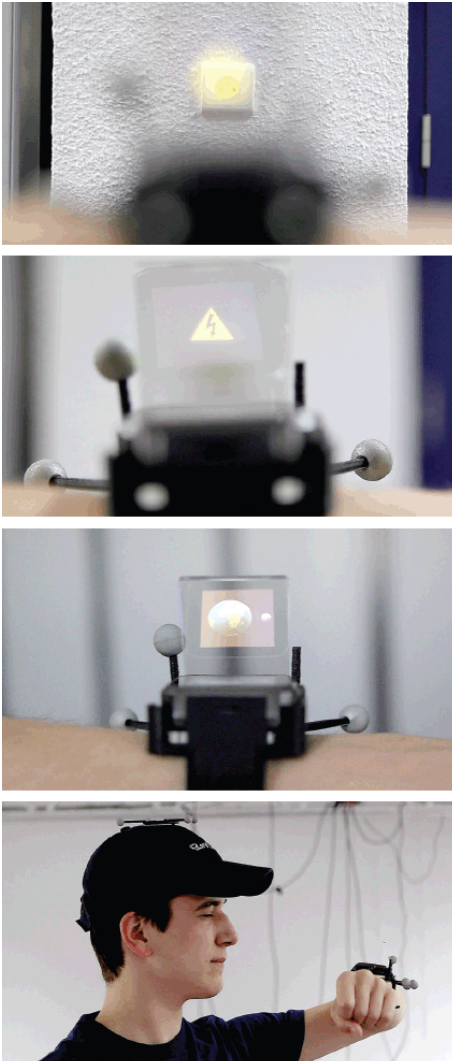
Johannes Schöning, University of Bremen

Alex Olwal, Google

Mathias Oben, Hasselt University

Rainer Malaka, University of Bremen

schoening@uni-bremen.de (<mailto:schoening@uni-bremen.de>)



WatchThru extends smartwatch displays into 3D space, enabling novel AR interactions.



(<http://deliveryimages.acm.org/10.1145/3150000/3143318/ins05.gif>)

[ABOUT INTERACTIONS \(/ABOUT\)](#) [ABOUT SIGCHI \(/ABOUT-SIGCHI\)](#)
[RENEW \(HTTPS://CAMPUS.ACM.ORG/PUBLIC/QJ/LOGIN_GENSIGQJ.CFM?RDR=PROMO=QJSIG&OFFERING=026&FORM_TYPE=SIG&CFID=7\)](#)
[SUBSCRIBE \(HTTPS://CAMPUS.ACM.ORG/PUBLIC/QJ/GENPUBQJ/GENPUBQJ_CONTROL.CFM?PROMO=QJPUB&PRODUCT=11247&FORM_TYPE=PUB&CLCOI=1\)](#)
[FOR AUTHORS \(/SUBMISSIONS\)](#) [FOR ADVERTISERS \(/FOR-ADVERTISERS\)](#) [PRIVACY \(/PRIVACY-POLICY\)](#) [CONTACT US \(/CONTACT-US\)](#)
Interactions is a bi-monthly publication of the ACM | (c) 2018

<http://interactions.acm.org/enter/view/demo-hc>